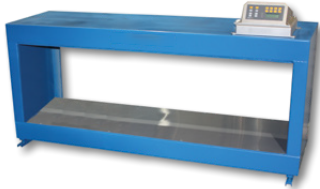


MDT/QDC Metal Detector



- **Reliable protection for all processing equipment and machinery**
- **Detection of ferrous and non ferrous metals**
- **Easy installation into existing belt conveyors - without the need for cutting the belt**
- **Simplicity of operation, adjustable sensitivity/ detection level and product compensation facility.**

The electronic MDT/QDC metal detector enables an automatic and continuous inspection of all materials which are non-metallic or nonconductive.

The materials to be inspected may be transported by belt conveyor, chute, pipeline, elevator or similar material handling equipment.

The QDC search coil dismantles for fitting around endless belt conveyors and alternative search coil configurations are available for special installations.

The MDT/QDC offers protection to all forms of processing plant against all tramp metal, from large pieces of channel iron or bolts, down to pieces of swarf and wire.

Typical materials examined includes plastics, rubber, glass, clay, fibres, wood, grain, chemicals, coal, cement, food products, powders, liquids and many others for machinery safeguard or protection of the operator or consumer.

For more information on our full range of products please contact us on the contact details below.

BUNTING - REDDITCH
BURNT MEADOW ROAD, NORTH MOONS MOAT,
REDDITCH, WORCESTERSHIRE, B98 9PA
E-MAIL: SALES.REDDITCH@BUNTINGMAGNETICS.COM
TEL: +44 (0)1527 65858