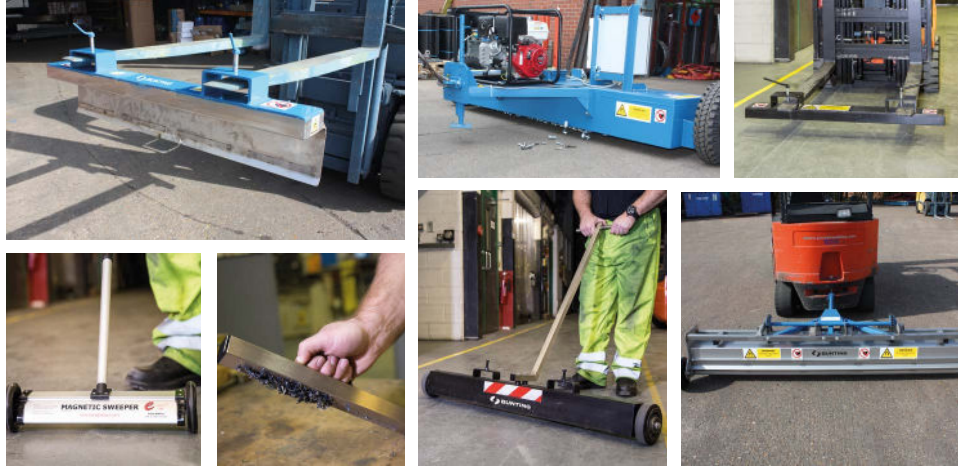


Magnetic Sweepers

DATA SHEET

Magnetic Sweepers, also known as Magnetic Brooms, are the perfect solution to the problem of clearing small ferrous metal objects, such as nails, tacks, nuts, bolts and metal shavings from the floor.

- Standard Forklift Sweeper
- Easy-Clean Forklift Sweeper
- Combi Magnetic Sweeper
- Handheld Magnetic Sweeper
- Worktop Magnetic Sweeper
- Towable Forklift Sweeper
- Electromagnet Towable Sweeper



STANDARD FORKLIFT SWEEPER

Our Standard Forklift Magnetic Sweeper is simple in design, easy to operate, robust and extremely effective at sweeping large areas.

Designed to be easily mounted onto universal forklift trucks, the forklift sweeper is fitted directly onto the forks using two 180mm wide pockets.

The magnet is constructed using a heavy-duty mild steel back bar enclosed in a stainless-steel case giving excellent durability. The fork mounted sweepers are available in a range of widths starting from 600mm wide, up to 2100mm wide however our most popular size is the 1200mm wide sweeper.



PartNo	Dimensions	Sweeping Height
MMSW-60	650 x 125 x 65mm	75mm
MMSW-90	950 x 125 x 65mm	75mm
MMSW-120	1250 x 125 x 65mm	75mm
MMSW-150	1550 x 125 x 65mm	75mm
MMSW-180	1850 x 125 x 65mm	75mm
MMSW-210	2150 x 125 x 65mm	75mm

TOWABLE FORKLIFT SWEEPER

The Bunting towable magnetic sweeper attaches to the rear of a vehicle and is an industrial ferrous waste cleaning machine. The sweepers are built to last in our factory in the UK. The Towable Forklift Magnetic Sweepers come with an automatic waste removal system so that the ferrous waste can be disposed of safely and easily.

As with all our sweepers, they are suitable for use indoors and outdoors and are fitted with heavy-duty rubber wheels and are built to maximum strength and durability to remain maintenance and trouble free. We advise towing at a speed of 5-6mph to achieve optimum results.



PartNo.	Dimensions	Sweeping Height
RS1200	1200 x 230 x 100mm	75mm
RS1500	1500 x 230 x 100mm	75mm
RS1800	1800 x 230 x 100mm	75mm
RS2000	2000 x 230 x 100mm	75mm
RS2200	2200 x 230 x 100mm	75mm

ELECTROMAGNET TOWABLE SWEEPER

Our Electromagnet Forklift Magnetic Sweeper is designed for airport runways, roads, shipping ports and large car parks.

Electromagnetic units can be manufactured with an operating width of up to 2,400mm and local controls that are mounted within the forklift cab are also supplied to allow the magnet to be switched off for releasing any collected ferrous materials.



PartNo.	Dimensions	Sweeping Height
EMRS1200	1200 x 230 x 100mm	75mm
EMRS1500	1500 x 230 x 100mm	75mm
EMRS1800	1800 x 230 x 100mm	75mm
EMRS2100	2100 x 230 x 100mm	75mm
EMRS2400	2400 x 230 x 100mm	75mm

EASY-CLEAN FORKLIFT SWEEPER

This sweeper is the same basic sweeper as the Standard Forklift Sweeper but is fitted with a non-magnetic stainless-steel plate to allow for the easy removal of extracted magnetic materials.

These fork mounted sweepers are available in a range of widths starting from 650mm to 2150mm wide.



PartNo.	Dimensions	Sweeping Height
MMSW60-EC-1	650 x 125 x 68mm	75mm
MMSW90-EC-1	950 x 125 x 68mm	75mm
MMSW120-EC-1	1250 x 125 x 68mm	75mm
MMSW150-EC-1	1550 x 125 x 68mm	75mm
MMSW180-EC-1	1850 x 125 x 68mm	75mm
MMSW210-EC-1	2150 x 125 x 68mm	75mm

COMBI MAGNETIC SWEEPER

The Combi Magnetic Sweeper has been specifically manufactured so that it can either be easily fitted onto a Forklift Truck or used manually with the addition of a simple to fix handle.

The Combi Sweeper has two mounted brackets for the fork tines to slide through. The standard distance between the midpoints of the brackets is 70cm, although this can be changed upon request.

For instances where a forklift truck cannot operate safely or if there is no forklift operator available the Combi sweeper can be simply and quickly turned into a manual hand operated sweeper. The handle which is supplied with the sweeper is simply bolted into place.



PartNo.	Dimensions	Sweeping Height
MAGSWEEP48CU3	1300 x 120 x 120 mm long	75-100mm

HANDHELD MAGNETIC SWEEPER

Handheld Magnetic Sweepers provide the perfect solution to the problem of clearing small ferrous metal objects, such as nails, tacks, nuts, bolts, paperclips and metal shavings from a workshop or garage floor to leave the floor area clean and tidy. Farriers and horse owners also use the Handheld Magnetic Sweeper for removing nails and other metal objects from bedding and courtyards, reducing the risk of foot injuries to the horse. It is also sometimes called a magnetic broom.

To pick up ferrous debris, fully extend the handle and twist to lock in an extended state, then simply roll the Handheld Magnetic Sweeper over the area to be cleared. Removal of the collected debris from the sweeper is also easy. The debris can be collected, taken to a bin and released into the bin with no need to have fingers touching the debris.



PartNo.	Dimensions	Sweeping Height
MAGSWEEP400	400mm Wide	25-50mm

WORKTOP MAGNETIC SWEEPER

A 325mm long stainless steel encased magnetic sweeper ideal for picking up swarf in the workshop environment. The central 300mm is magnetically active. Simply hold the Worktop Handheld Sweeper by the handle and move towards the ferrous materials you wish to pick up. The side opposite the handle is where the active magnetic strip exists (the magnetic face is 30mm wide). After sweeping, simply wipe the collected material away (a cloth is all that is required). The Worktop Handheld Sweeper will clamp strongly onto metal sheets and plates, allowing easy storage against e.g. cabinets.

The Worktop Handheld Sweeper can also be used in offices, at home and in factory shop floors.

It is possible to produce stronger versions of this unit with the same overall dimensions. If interested, please contact us for a quotation.



PartNo.	Dimensions	Sweeping Height
MAGSWEEP325WORKSHOP	325mm L x 30mm W	25-50mm