

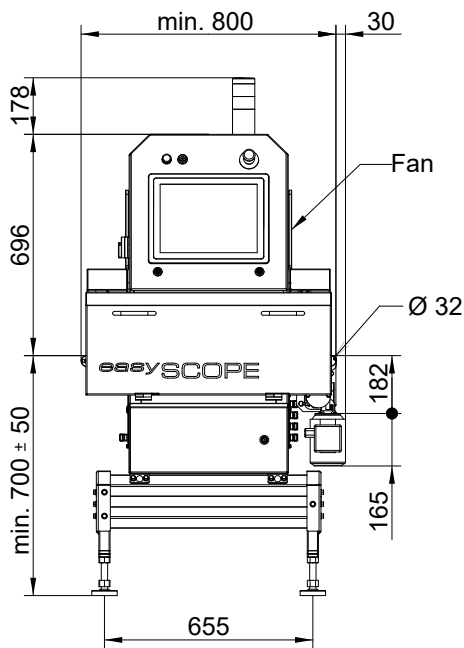


Foreign body detector for packaged piece goods

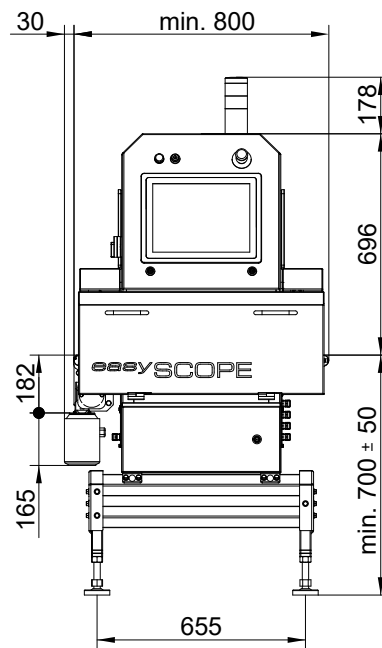
## Technical data sheet

Version 11/21

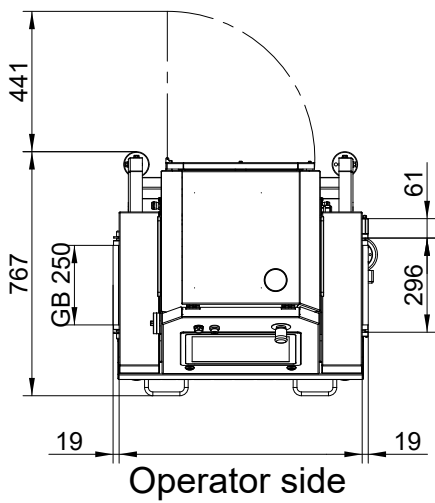
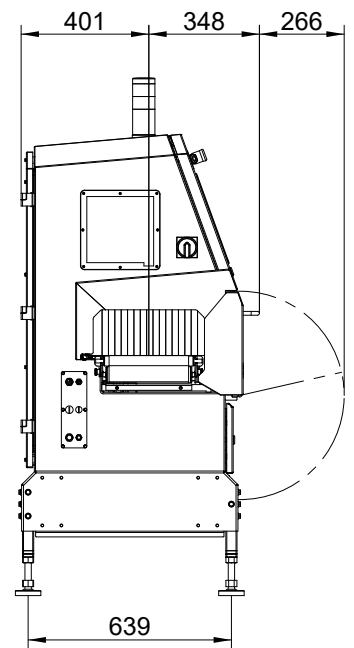
Dimensions



Conveying direction →

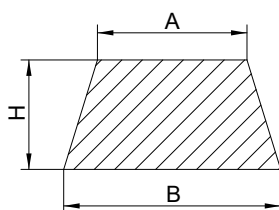


← Conveying direction

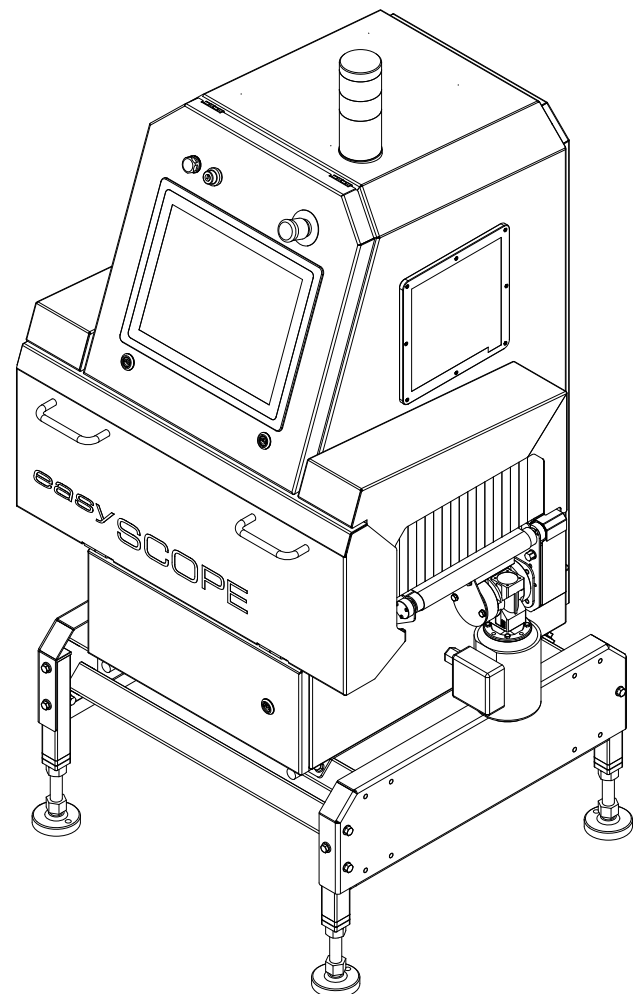


Operator side

Sensitive area



Version	A	B	H
190	131	190	120
238	164	238	120



Project-specific versions available

## Technical specifications

Model	easySCOPE ST
Housing:	Stainless steel 1.4301 (AISI 304), sandblasted
Protection rating:	Housing IP 55 (optional IP 65); conveyor belt IP 65
Ambient temperature:	+2°C to + 35°C (with filter fan) + 2°C to + 45°C (with air conditioner)
Storage temperature:	-10°C to +60°C
Relative humidity range:	up to 90% (without condensation)
Operating voltage:	230 V AC ± 10% AC, 50-60 Hz, TN-S network
Device fuse protection:	10 A
External fuse protection	16 A
Power consumption:	max. 500 W with filter fan max. 750 W with air conditioner
Power connection:	approx. 3 m cable with Schuko plug
X-ray generator:	max. 60 kV; max. 120 W
X-ray receiver:	Application-specific, from 0.4 mm diode size
X-ray emission:	< 0.5 µSv/h
Radiation protection curtain:	Lead-free rubber matrix with reinforcement fabric, blue colour
Wear protection:	Thermoplastic polyurethane (TPU), transparent
Conveying length:	Application-specific, from 800 mm
Conveying height:	Application-specific, from 650 mm
Belt width:	250 mm
Pass-through height:	max. 120 mm
Drive:	Gear motor
Conveying speed:	Application-specific, up to 1.2 m/s Other speeds available on request
Belt material:	Thermoplastic polyurethane (TPU), white colour Food approval according to EU, FDA, USDA
Load:	approx. 5 kg at v = 1 m/s approx. 10 kg at v = 0.5 m/s
Weight:	from approx. 225 kg

## Standard delivery

- Operating manual
- EU Declaration of Conformity
- X-ray inspection system with integrated front cover and belt conveyor
- Powerful industrial PC with Windows 10
- 15" HMI with touchscreen
- Uninterruptible power supply (UPS)
- Quick-release device for belt
- 2-way LED signal light
- Ports: USB, Ethernet
- Automatic log export
- Standard software (Threshold value evaluation, Adaptive threshold value evaluation, Edge suppression, Item counter and segmentation)

## Available accessories and options

- Protection rating IP 65 to 45°C ambient temperature
- Separation systems: pushers, blower nozzles
- Lockable and foldable stainless-steel collecting container, with waste monitoring and fill level control
- Stainless steel castors (from a conveying height of 850 mm ± 50 mm)
- Side stainless steel guide rails
- Signal light in additional colours: green (conveyor belt), blue (detector test); expandable with acoustic unit
- Retailer kit (extended sensor package)
- Advanced image processing functions: clip hiding, weight checking and integrity
- mesuNET (network software for monitoring and documentation)
- mesuREMOTE (remote maintenance module)